

CANDIDATURE  
**RHINE-  
RUHR  
2025  
FISU  
WORLD  
UNIVER-  
SITY  
GAMES**  
SPORT  
MEETS  
SCIENCE

german  
university sports federation



Federal Ministry  
of the Interior, Building  
and Community



**GO!**

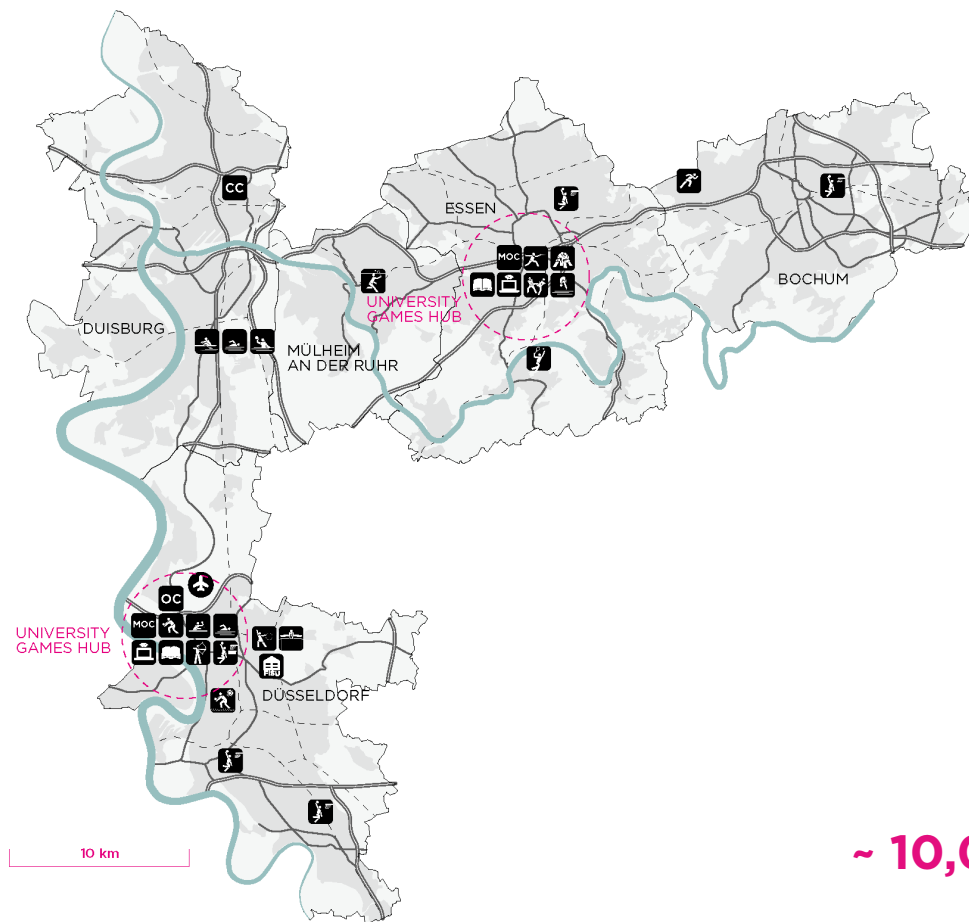
**EXECUTIVE  
SUMMARY**

March 2021

CANDIDATURE  
**RHINE-  
RUHR  
2025  
FISU  
WORLD  
UNIVER-  
SITY  
GAMES**  
SPORT  
MEETS  
SCIENCE

	page
Games Concept	/03
Vision and Concept	/04
Impact and Legacy	/05
Support and Collaboration	/06
Sports Programme	/07
Experience and Sports Organization Personnel	/08
Sports Facilities	/09
Opening and Closing Ceremonies	/12
Athletes' Accommodation Concept	/13
Hotel Room Inventory	/14
Transport	/15
Cultural Programme	/16
Educational Programme	/17
Legal Structure	/18
Organizational Budget	/19
Imprint	/20

# GAMES CONCEPT



**16 - 27 July 2025**

**1** Region



**5** Host Cities



**21** Competition Venues



**~ 10,000** Athletes and Officials



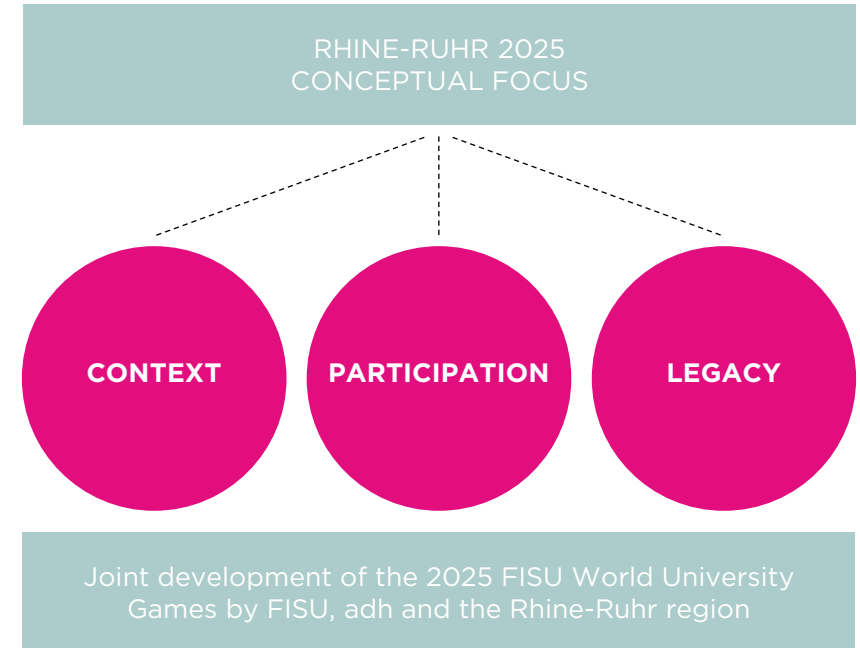
# VISION AND CONCEPT

THE 2025 FISU WORLD UNIVERSITY GAMES WILL EMPHATICALLY STIMULATE THE RHINE-RUHR REGION ON ITS PATH FROM A PRIMARILY INDUSTRIAL WORLD TO A KNOWLEDGE SOCIETY. INNOVATION, LEGACY AND SUSTAINABILITY THUS FORM THE CORE OF THE VISION.

The plan of FISU, adh and the Rhine-Ruhr region is to jointly advance the FISU World University Games format, focusing on the following three conceptual pillars:

- 1. Incorporation into the local context and boosting regional development**
- 2. Participation of students, universities, and young people**
- 3. Social, economic, and ecological legacy**

Hosting the 2025 FISU World University Games is considered a key stimulus in the transformation process – one that fits the region's context, has the potential to activate the expertise of universities, educational institutions and the local economy, and creates a positive long-term impact for society.



# IMPACT AND LEGACY

The FISU World University Games offer a platform for positive development and create a legacy at a local, regional and national level. Universities, students, and businesses will be involved not just as athletes and spectators, but as sources of knowledge, talents, catalysts, employers, employees or interfaces. The 2025 FISU World University Games will therefore be both a sporting and a networking event, a presentation platform, a collaborative initiative, a talent pool, a stage for cultural and social interaction – in other words, it will interface theory and practice.

The hosting concept of the Rhine-Ruhr 2025 FISU World University Games builds on the local context of the region, leaving a positive legacy for the region, the cities, its citizens and beyond. Long-term benefits will be achieved in the following areas and issues:



**Social cohesion and participation**



**International exchange**



**Science and education as trend setters**



**Lock into research, technology and science for a sustainable future**



**Promoting cooperation**

**Marketing the region as a knowledge hub**



**Quality of life as a competitive factor** ★★☆☆

**Promoting an active lifestyle**



**Sports legacy of university sports**



**A new mega-sports event perspective**



# SUPPORT AND COLLABORATION

Since developing the bid, the adh has been interacting closely with the host cities, the State of North Rhine-Westphalia, the Federal Government, the sport federations and the representatives of the universities.

During the planning phase, this close collaboration will continue in working groups dedicated to specific topics. Moreover, subsets of tasks will be handled by local authorities and operating companies, bringing expertise and know-how to the local people.



## PUBLIC AUTHORITIES

- > Federal Ministry of the Interior, Building and Community
- > State Chancellery of North Rhine-Westphalia
- > City of Bochum
- > City of Duisburg
- > City of Düsseldorf
- > City of Essen
- > City of Mülheim an der Ruhr

## ACADEMIC BODIES

- > Association of Private Universities
- > German Academic Exchange Service
- > German Rectors' Conference
- > State Conference of University Rectors of North Rhine-Westphalia

## SPORT AUTHORITIES

- > German Olympic Sports Confederation
- > National Paralympic Committee Germany
- > State Sports Confederation of North Rhine-Westphalia
- > State Conference for University Sports of North Rhine-Westphalia
- > German Athletics Association
- > German Badminton Association
- > German Basketball Federation
- > German Fencing Federation
- > German Gymnastics Federation
- > German Judo Federation
- > German Rowing Federation
- > German Shooting and Archery Federation
- > German Swimming Federation
- > German Table Tennis Federation
- > German Taekwondo Union
- > German Tennis Federation
- > German Volleyball Federation

# SPORTS PROGRAMME

The Rhine-Ruhr 2025 FISU World University Games will take place over a period of 12 days, starting with the opening ceremony on Wednesday 16 July and ending with the closing ceremony on Sunday 27 July. The main emphasis of the 12-day event will be on the two event weekends as they appeal most to spectators and thus have the greatest potential for showcasing the FISU World University Games. The concept of multi-sports venues and the regional clusters of existing sports venues offer several tangible advantages. Firstly, it fosters international interaction and interdisciplinary contacts among the athletes and secondly gives fans and spectators an opportunity to enjoy several different sports and competitions within a single day without much need for travel.

15 Compulsory Sports  
+  
3 Optional Sports



	DAY -1	DAY 0	DAY 1	DAY 2	DAY 3	DAY 4	DAY 5	DAY 6	DAY 7	DAY 8	DAY 9	DAY 10	DAY 11	TOTAL	TOTAL
	TUE	WED	THU	FRI	SAT	SUN	MON	TUE	WED	THU	FRI	SAT	SUN	COMP.	MEDAL
	15/07	16/07	17/07	18/07	19/07	20/07	21/07	22/07	23/07	24/07	25/07	26/07	27/07	DAYS	EVENTS
CEREMONIES	OC						CC								
ARCHERY								Q	Q	Q	F	F		5	10
ATHLETICS							F	F	F	F	F	F		6	50
BADMINTON			Q	Q	F	F			Q	Q	F	F		8	6
BASKETBALL		Q	Q	Q	Q	Q	Q	Q	F	F				9	2
DIVING				Q	Q	F	F	F	F	F				7	13
FENCING			F	F	F	F	F	F						6	12
GYMNASTICS, ARTISTIC		Q	F	F	F	F								5	14
GYMNASTICS, RHYTHMIC									Q	F	F			3	8
JUDO			F	F	F	F								4	18
SWIMMING			F	F	F	F	F	F	F					7	42
TABLE TENNIS			Q	Q	Q	Q	F	F	F	F				8	7
TAEKWONDO			F	F	F	F	F	F	F					7	23
TENNIS				Q	Q	Q	Q	Q	Q	Q	F	F		9	7
VOLLEYBALL				Q	Q	Q	Q	Q	Q	Q	F	F		9	2
WATER POLO	Q	Q	Q	Q	Q	Q	Q	Q	Q	Q	Q	F	F	13	2
3X3 BASKETBALL			Q	Q	F	F								4	2
BEACH VOLLEYBALL								Q	Q	Q	F	F		5	2
ROWING				Q	F	F								3	13



# EXPERIENCE AND SPORTS ORGANIZATION PERSONNEL

## HOSTING EXPERIENCE

Germany and the Rhine-Ruhr Region are renowned locations for major sport events and hosted a broad selection of events of all shapes and sizes in recent decades. The experiences gained mean that regional knowhow and the processes involved are being constantly optimized. Realization and organization of the Rhine-Ruhr 2025 FISU World University Games will benefit from this.

## RECRUITING PERSONNEL

The LOC will be able to recruit sufficient personnel to organize the 2025 FISU World University Games. The array of options and supporters in the German sports world and at German universities will facilitate the recruiting process. Moreover, the LOC can rely on experienced staff from the many events already organized here. Furthermore, the adh has a long tradition of including students in the organization of national and international sports events and the plan is for it to play a major role in the organization of the Rhine-Ruhr 2025 FISU World University Games.

### Sports Experience in the Region (2015-2019):

Judo Grand Slam, Ruhr Games, European Fencing Championships, IHF Men's World Championships, Tour de France - Grand Départ, ETU European Championships, ITTF World Championships, Ice Hockey World Championships, FEI European Championship

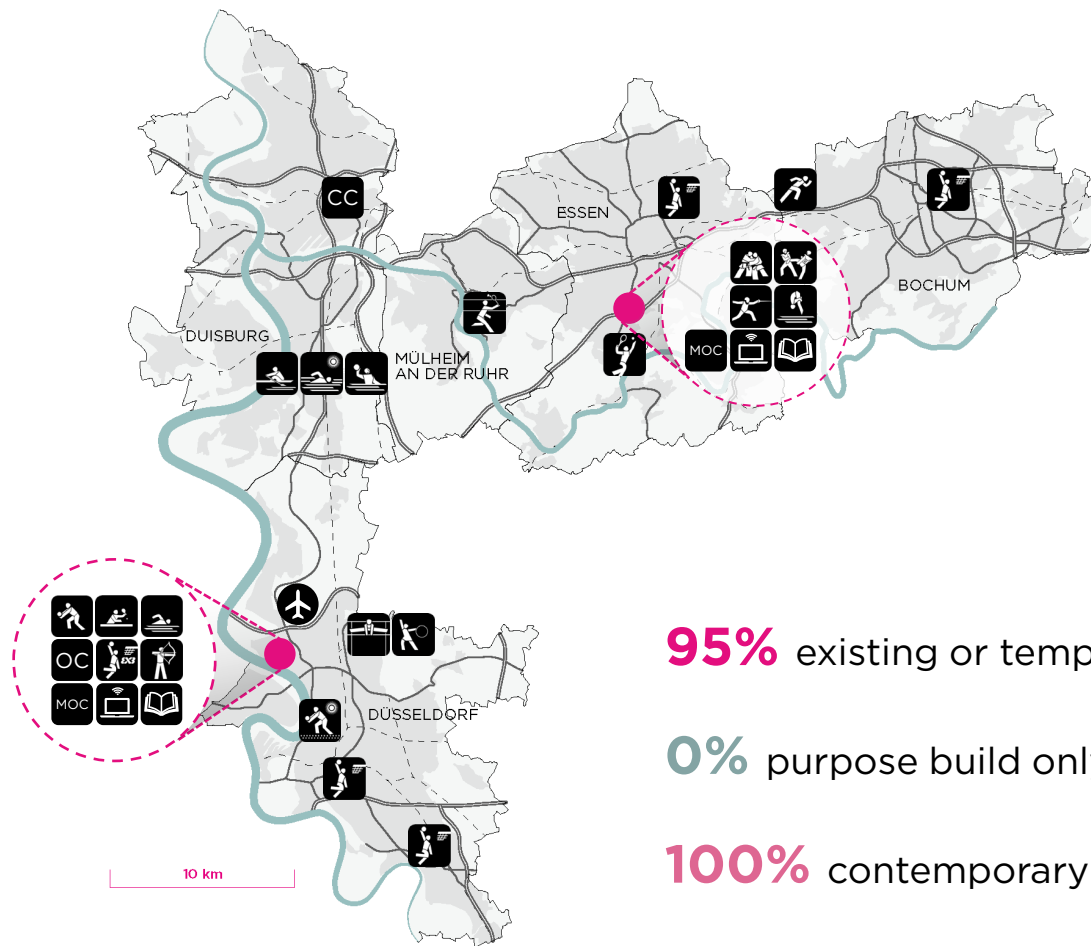
### Sports Experience in Germany (2009-2019):

Gymnastics World Championships, FIVB Beach Volleyball World Championships, IHF Men's World Championship, European Championships, IHF Women's World Championships, UEC European Track Cycling Championships, World Fencing Championships, UIPM Senior World Championships, World Karate Championships, IAAF World Championships





# SPORTS FACILITIES



## VENUE CONCEPT

The concept hinges on 21 competition venues at three main clusters plus a few stand-alone venues and relies exclusively on using existing and temporary facilities in places with in-depth experience of hosting sports events. The selection of competition venues and the respective locations of each sports discipline was based on three key factors:

1. Existing sports expertise,
2. sustainable development, and
3. a compact Games footprint despite their regional nature.

**95%** existing or temporary venues

**0%** purpose build only for the Games

**100%** contemporary Games

# SPORTS FACILITIES

## DÜSSELDORF

During the 2025 FISU World University Games, Düsseldorf will act as the competition venue for eight different sports. The Arena Park with the Merkur Spiel-Arena and the two halls of the adjacent Messe Düsseldorf will be one of the main hubs of the Games.



SPORT	COMPETITION VENUE	CAPACITY	CONSTRUCTION STATUS
Taekwondo	Messe Essen - Hall 6	1,000	Existing / temp. overlay
Fencing	Messe Essen - Hall 7	1,000	Existing / temp. overlay
Judo	Grugahalle	3,000	Existing
Diving	Grugabad	600	Existing
Basketball	Sportpark am Hallo	2,300	Existing
Tennis	ETUF	2,500	Existing

SPORT	COMPETITION VENUE	CAPACITY	CONSTRUCTION STATUS
Volleyball	Merkur Spiel-Arena	11,000	Existing / temp. overlay
Table Tennis	Messe Düsseldorf - Hall 8a	2,000	Existing / temp. overlay
Swimming	Messe Düsseldorf - Hall 8b	2,500	Existing / temp. overlay
Archery	Arena-Park - Archery Range	500	Temporary
3x3 Basketball	Arena-Park (tbd)	800	Temporary
Artistic Gymnastics Rhythmic Gymnastics	ISS Dome	4,000	Existing
Basketball	Mitsubishi Electric Halle	3,000	Existing
Basketball	CASTELLO	3,200	Existing
Beach Volleyball	Burgplatz	1,000	Temporary
	Rathausplatz	285	Temporary
	Mannesmannufer	500	Temporary

## ESSEN

The city of Essen will host competitions of six different sports during the event. With the Taekwondo, Fencing, Judo and Diving competitions held in the Gruga-Complex, Essen is home of another main hub of the 2025 FISU World University Games.



# SPORTS FACILITIES

## DUISBURG

After successfully hosting the 1989 Universiade, Duisburg will be home to the Water Polo, Rowing, and Marathon Swimming competitions during the 2025 FISU World University Games.

SPORT	COMPETITION VENUE	CAPACITY	CONSTRUCTION STATUS
Rowing Swimming (Marathon)	Regatta course Duisburg	2,000 (+6,000)	Existing
Water Polo	ASC Duisburg	800	Existing
Water Polo	DSV 98	250	Existing

## MÜLHEIM AN DER RUHR

Mülheim an der Ruhr is home to the German Badminton Federation and is thus superbly equipped to host the 2025 FISU World University Games Badminton tournament. Experienced operators and the local fan base ensure a great basis for the professional organization of the tournament and a full house of spectators.

SPORT	COMPETITION VENUE	CAPACITY	CONSTRUCTION STATUS
Badminton	Westenergie Sporthalle	1,420 (finales 2,000)	Existing

## BOCHUM

During the 2025 FISU World University Games the city of Bochum will host two different sports. The track and field competitions will take place in the Lohrheidestadion and some of the preliminary round matches of the Basketball tournament will be played at the Rundsporthalle.

SPORT	COMPETITION VENUE	CAPACITY	CONSTRUCTION STATUS
Athletics	Lohrheidestadion	17,000	Existing / perm. works req.
Basketball	Rundsporthalle	900	Existing



# OPENING AND CLOSING CEREMONIES

## OPENING CEREMONY

The opening ceremony will be held in Düsseldorf at the Merkur Spiel-Arena. Thanks to its fit-out as well as the broad and excellent experience there in hosting major events of all kinds, the multipurpose arena offers ideal conditions for realizing this special item on the FISU World University Games agenda. The multipurpose arena can seat up to 54,600 spectators, who can follow events from two tiers of seats. The roof of the arena requires only 30 minutes to close – it then lets no light in – meaning that the open stadium can be transformed into a closed hall very easily, creating a unique ambiance during cultural events.



## CLOSING CEREMONY

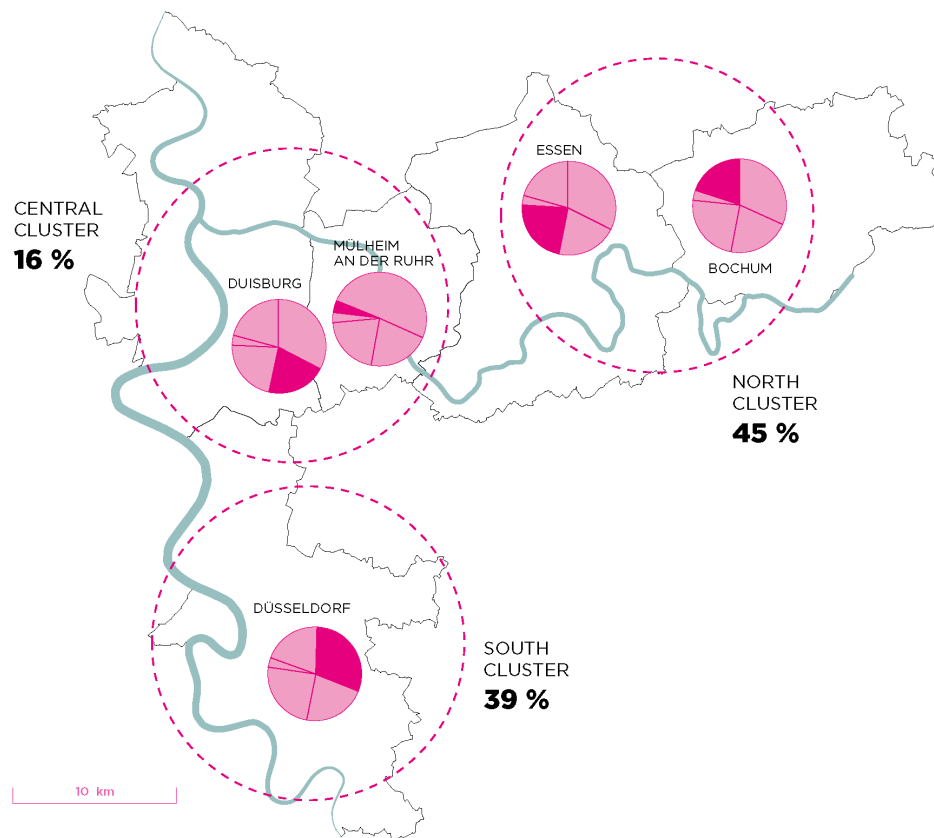
In the form of Landschaftspark Duisburg-Nord, the Rhine-Ruhr 2025 FISU World University Games concept has a special location for the closing ceremony, too. The parkland offers a unique opportunity to design the closing ceremony, and the focus will be firmly on students. To this end, numerous activities are planned for all over the park, many of which encourage direct participation and will foreground cultural and specialist interaction between the athletes. At the same time, the park possesses all the qualities required to integrate the traditional elements of the closing ceremony into the programme.



# ATHLETES' ACCOMMODATION CONCEPT

With a view to the criteria of sustainability and economic feasibility, no athletes' village is planned for the Rhine-Ruhr 2025 FISU World University Games; instead, athletes and officials alike will be accommodated in hotels. The conditions for this are excellent in the Rhine-Ruhr region. As described in detail in chapter 09 Accommodation, there are more than sufficient hotels available. Particularly in light of the lower capacity utilization of the existing hotel infrastructure during the summer months (namely less than 50 % on average), the regular capacities at hand easily suffice to provide lodging for the delegations and all the other constituent groups, too.

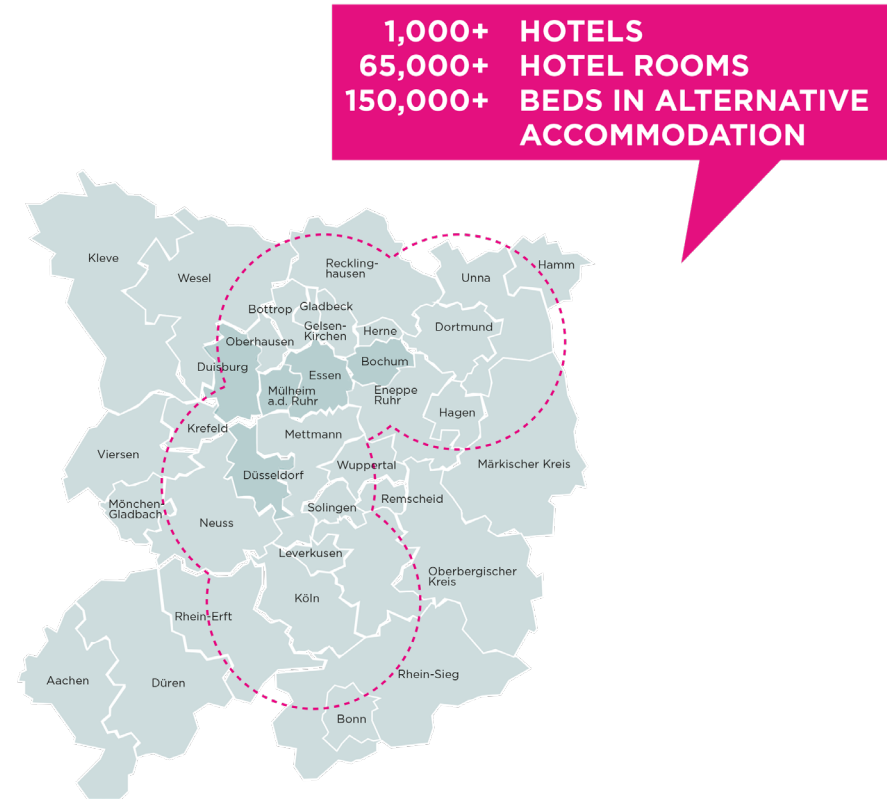
In order to keep travel times for the athletes and officials to a minimum and to optimize logistics, the accommodation concept hinges on spreading everyone across three accommodation clusters. To the extent that the delegations so request, the athletes will be accommodated in the particular cluster in which their competition and training venues are located.



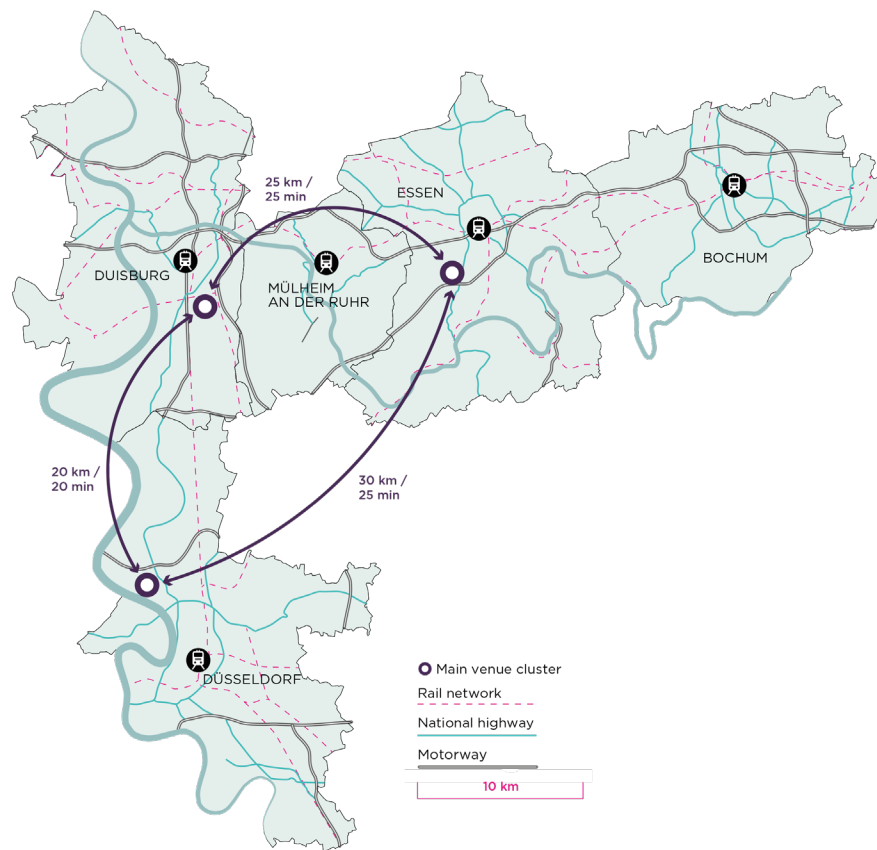
# HOTEL ROOM INVENTORY

The accommodation concept draws on a wide array of hotels in different price segments and thus reflects the heterogeneity of the stakeholder groups. The total capacity of the hotels and alternative forms of lodging far exceeds requirements – meaning that all constituent groups will

The Rhine-Ruhr region already has a large range of accommodation options that more than meet the requirements for hosting the FISU World University Games in terms of capacities and standards. Sufficient capacities to provide accommodation for all participants are guaranteed – not just in light of the impressive overall capacity of around 50,000 beds in the Bochum, Duisburg, Düsseldorf, Essen and Mülheim an der Ruhr venues themselves, but in particular during the Games period. As business hubs, the five local authorities tend on average to only record capacity utilization of less than 46 % during the summer months of July and August and thus in the event of their regular operations there would still be in excess of 26,000 free beds. This high level of customarily unused capacity is more than the requirements and therefore provides an ideal basis for optimally hosting the FISU World University Games in summer 2025.



# TRANSPORT



## OVERALL TRANSPORTATION CONCEPT

All the athletes, officials and guests will stay in hotels in the host cities. The athletes and officials will be accommodated in hotels that are as close to the relevant training and competition grounds as possible to reduce travel distances and times wherever feasible. In this regard, three accommodation clusters have been defined:

- > SOUTH CLUSTER: DÜSSELDORF
- > CENTRAL CLUSTER: DUISBURG AND MÜLHEIM AN DER RUHR
- > NORTH CLUSTER: ESSEN AND BOCHUM

Each cluster consists of the respective venues and the hotels assigned to them. This cluster-based form of accommodations will serve to guarantee smooth, economic and ecological transportation. There will be two supra-ordinated hubs at Messe Düsseldorf and Messe Essen. These central units will house the administrative and other core functions and act as distributors for the individual FISU World University Games venues and the hotels. There will be a regular direct shuttle service for the duration of the FISU World University Games between the two hubs and the other core venues.



# CULTURAL PROGRAMME

In the public mind in Germany the FISU World University Games are primarily considered as a top sports event. However, it is foreseen that the accompanying cultural programme and other accompanying university events will also play a prominent role in public perception of the Games.

The vision for the Rhine-Ruhr 2025 FISU World University Games is to create a platform for students which, while emphasizing top performance sports, also functions to bring together students from all over the world and encourage interaction between them. The cultural programme plays a special role in this regard. Intercultural exchange, active participation, being part of the event – these will all be elements that define the Rhine-Ruhr 2025 FISU World University Games alongside the stronger inclusion of science, research and business.

The cultural programme will focus clearly on the FISU World University Games' protagonists: The students. Young and modern cultural elements with local roots will fire the students' imagination, embody the joie de vivre of the Rhine-Ruhr region, and encourage everyone to become actively involved. As in many other areas, the plan here is to include the universities in developing the programme.



# EDUCATIONAL PROGRAMME

The academic programme constitutes one of the core elements of the Rhine-Ruhr 2025 FISU World University Games. The event will act as a platform for all manner of interaction between universities, students, and partners from the worlds of politics and business. The educational programme built around the FISU World Conference, which will be prepared and organized together with FISU. Furthermore, in close collaboration with academic organizations in North Rhine-Westphalia, such as the Ministry for Culture and Science, the State Rectors Standing Conference as well as the universities, scholarly conventions and conferences on future themes that are of great relevance will be organized and realized in the framework of the event. Examples of possible thematic areas would be events on mobility, on digitization or inclusion of the physically challenged.

## DUAL CAREERS

Since 1999, the adh has been supporting dual careers by consistently working to reconcile university studies and top performance sports. Preparing and hosting the Rhine-Ruhr 2025 FISU World University Games will offer an excellent opportunity to discuss the topic of dual careers for top athletes, who are students in a publicly high-profile manner – and also actively advance the academic debate on the topic.

## ADDITIONAL EDUCATION MEASURES

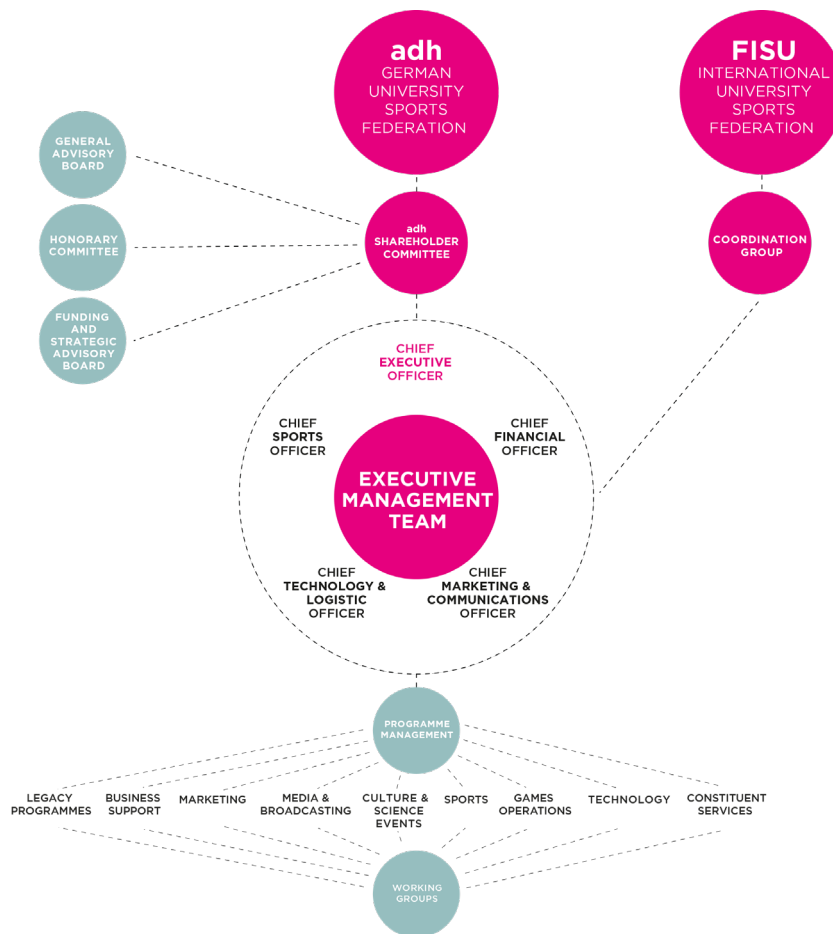
While preparing and hosting the 2025 FISU World University Games there will be special education offerings for specific target groups such as our volunteers, leading athletes taking part, media representatives and medical personnel who cannot or do not participate in the FISU World Conference. Possible topics to be covered by the offerings: Anti-doping, good governance, dual careers, sports journalism or seminars in sports medicine or sports science, to name but a few possible examples.



# LEGAL STRUCTURE

The Local Organizing Committee (LOC) for the Rhine-Ruhr 2025 FISU World University Games will be established as a non-profit limited liability company under German law (gGmbH) and is therefore an independent legal entity in its own right. With the adh as the only shareholder in the company, the legal structure of a gGmbH best fits the requirements as regards the necessary organizational structure of the LOC and enables it to respond flexible to changes and the possible need for future adjustments of the structure.

The LOC will be headed by a managing director, the Chief Executive Officer (CEO). The CEO will be responsible for coordinating and guiding the Executive Management Team, which will also include experts in Financing, Marketing, Sports and Technology. The CEO will head all operating activities and will report regularly to the adh Shareholder Committee on the project's current status. The following committees and bodies will support the LOC in planning the Rhine-Ruhr 2025 FISU World University Games in specific fields such as financing, legal issues, political and business networking, and sustainability, and guarantee professional interaction between the stakeholders involved in the Games.



# ORGANIZATIONAL BUDGET

EXPENDITURE	CATEGORY	EUR [2021]	%
Organizing Rights Fee		20,000,000	13 %
World University Games Budget (Operational)	Accommodation	5,277,000	3 %
	Accreditation	467,000	<1 %
	Administration and Office Management	4,350,000	3 %
	Arrival and Departure	135,000	<1 %
	Athletes' Accommodation Management	1,350,000	1 %
	Brand, Identity and Image	3,759,000	2 %
	Brand Protection	105,000	<1 %
	Broadcasting	4,881,000	3 %
	Ceremonies	3,000,000	2 %
	Communication	2,600,000	2 %
	Cultural Activities	950,000	1 %
	Delegation Services	370,000	<1 %
	Doping Control	625,000	<1 %
	Education	500,000	<1 %
	Event Services	200,000	<1 %
	Finance	465,000	<1 %
	FISU Relations	325,000	<1 %
	Food and Beverage	7,359,000	5 %
	Governmental Relations	200,000	<1 %
	Knowledge Management	320,000	<1 %
	Language Services	500,000	<1 %
	Legal	incl. in Admin. and Office Management	
	Legacy and Sustainability	2,250,000	1 %
	Licensing	95,000	<1 %
	Marketing	900,000	<1 %
	Media Services	1,600,000	1 %
	Medical Services	800,000	<1 %
	Planning and C4	1,925,000	1 %
	Protocol	770,000	<1 %
	Publications	355,000	<1 %
	Risk Management	1,670,000	1 %
	Security	3,276,000	2 %
	Sport	6,320,000	4 %
	Technology	9,900,000	6 %
	Ticketing	500,000	<1 %
	Transportation	8,810,000	6 %
	Venues and Infrastructure	17,768,000	11 %
	Venue Management	2,250,000	1 %
	Workforce	25,266,000	16 %
	Contingency	15,282,000	1 %
Non-World University Games Budget	Venue Construction	-	
	Venue Renovation	-	
TOTAL EXPENDITURE		157,475,000	

The balanced overall budget for the Rhine-Ruhr 2025 FISU World University Games comes to EUR 157.5 million and includes not only cost items calculated bottom-up but also a contingency fund of EUR 15.3 million for unforeseeable items.

The total expenses of EUR 157.5 million will be covered by a combination of revenues generated by the FISU World University Games, as well as broad public-sector support. Charging a participation fee will give rise to about EUR 8.4 million, and additional revenues of EUR 11 million are forecast from other marketing activities, such as ticketing, sponsoring, merchandising and official suppliers. The strong support from the public sector guarantees coverage for the remaining costs.



# IMPRINT

## / PUBLISHER

Allgemeiner Deutscher Hochschulsportverband (adh), Max-Planck-Str. 2, 64807 Dieburg

E-Mail: adh@adh.de / www.adh.de

## / RESPONSIBLE FOR CONTENT

Allgemeiner Deutscher Hochschulsportverband (adh)

## / CONTENT DEVELOPMENT AND COORDINATION

PROPROJEKT Planungsmanagement & Projektberatung GmbH

## / VENUE AND TRANSPORTATION PLANNING

AS+P Albert Speer + Partner GmbH

## / LAYOUT AND DESIGN

AS+P Albert Speer + Partner GmbH

## / TRANSLATION AND EDITING

Dr Jeremy Gaines Text / Translation

## / IMAGES

Achim Meurer © MST // Alexander Vogel // André Goerschel // Arndt Falter // D.LIVE // D.LIVE-Hans Blossey  
// D.LIVEJörg Eicker // D.LIVE-Anke Hesse // D.LIVE-Ansgar M. van Treeck // D.LIVE-David Young // Düsseldorf  
Marketing & Tourismus GmbH // FISU // Henning Schacht // Hoch-Zwei // Peter Leßmann // Peter Weihs // PR-Fotografie  
Köhring © MST // ©Ruhr\_Games\_Ilkay\_Karakurt // Rainer Schimm // Stadt Bochum, Pressestelle // Thomas Berns //  
Tobias Hopfgarten // Uni Duisburg-Essen // Zoltan Leskova

## / SPORT PICTOGRAMS

© DOSB/Sportdeutschland

15 MAY 2021

RHINE-RUHR 2025 FISU WORLD UNIVERSITY GAMES

